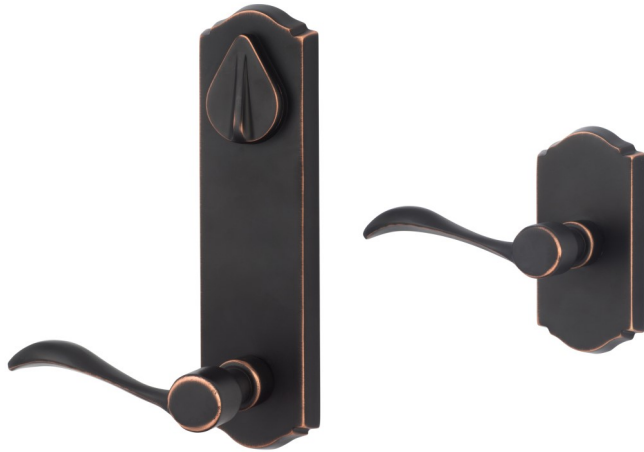
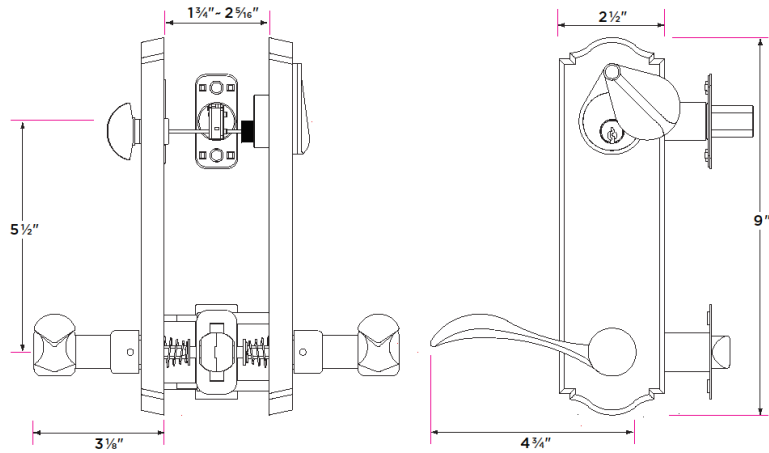


Sandstone Lever



SS107



DESCRIPTION

PRODUCT CODE

CASE

Passage (hall/closet) Both sides always free	SS101	12
Privacy (bed/bath) Locked by push pin. Unlocked by push pin, lever turn, or emergency pin outside	SS102	12
Entry with Deadbolt (exterior door) bottom portion is passage function, locked/unlocked by deadbolt	SS107	8
Dummy (closet) Inactive, single-sided, flush mount with two wood screws	SS100	12
Double Dummy (closet) Inactive, double-sided, mounted by thru-bolts	SS100-2	12

Finishes

11P Vintage Bronze

Door Handing

Handing Required

Door Thickness

1 3/8" to 1 3/4"

Expansion pack available for 2 1/4" thick doors

Key Cylinder

5 Pin KW1

5 Pin SC1 option

Strike Plates

2 1/4" x 1 3/4" full-lip radius corner standard

2 1/4" x 1" deadbolt strike and

2 3/4" x 1 1/8" deadbolt strike

Latch

2 1/4" x 1" radius corner faceplate

Non-adjustable 2 3/8" or 2 3/4" 2 3/8" drive-in latch available

1/2" throw bolt

Split spindle- both sides operate independently

1" deadbolt throw

Cut resistant bolt with hardened steel rolling inserts

Door Prep

Crossbore 2 1/8"

Edgebore 1"

5 1/2" center-to-center

Materials

Solid brass

All metal parts