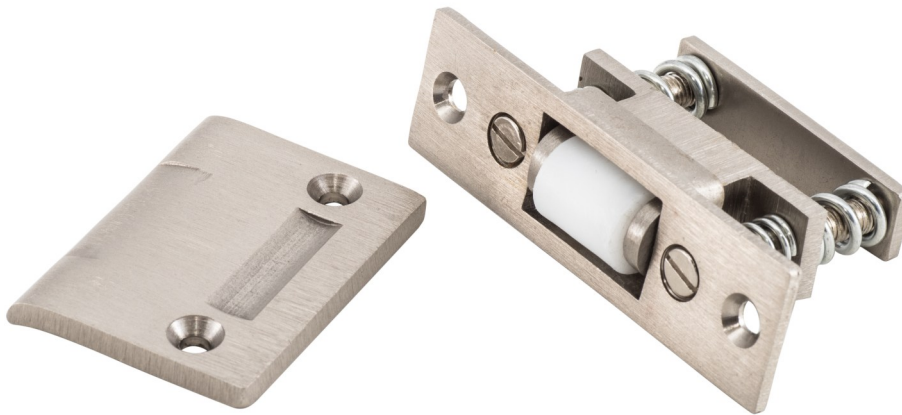
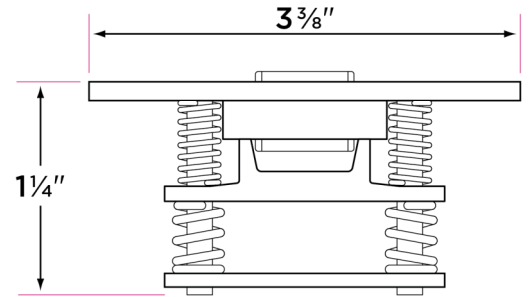


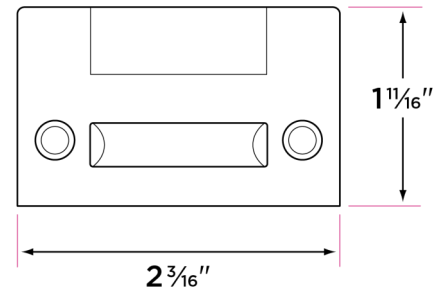
## Heavy Duty Roller Catch



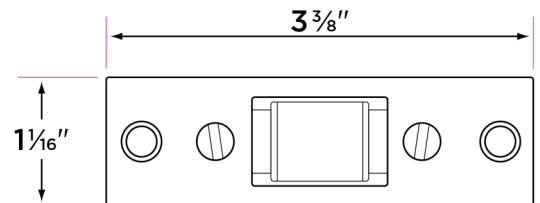
BC4



BC4



BC4



DESCRIPTION

PRODUCT  
CODE

CASE

Heavy Duty Roller Catch

BC4

5bx/50ctn

### Finishes

- 15 Satin Nickel
- 11P Vintage Bronze
- 26 Polished Chrome
- FBL Flat Black
- SB Satin Brass

### Screws

Installation hardware included

### Door Thickness

Minimum 1 3/8"

### Materials

All metal parts